



HSR-GK Redesigned

— Blocks and rails you can purchase individually —

Freedom to mix and match,
quickly and easily
Redesigned for even
higher performance



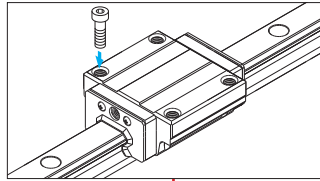
1 Improved basic performance.

- More stable rolling resistance
- Can handle high speeds (up to 5 m/s)

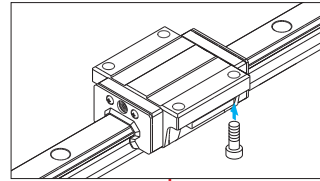
2 Combination design with elements taken from existing product lineup.

Elements of A/LA and B/LB block types have been combined to create a new C/LC type.

Existing HSR-A/LA



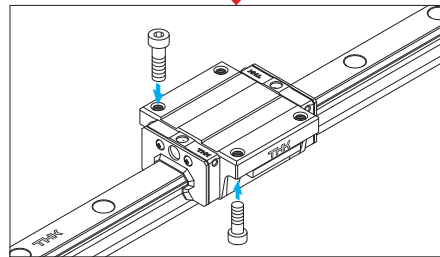
Existing HSR-B/LB



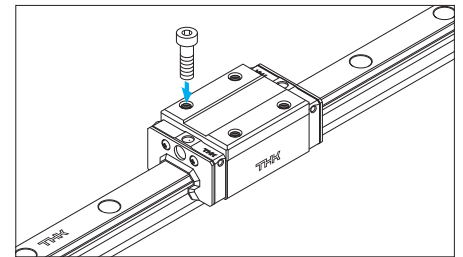
The lineup of block types now consists of two types—C/LC and R/LR.

C/LC can be installed from either the top or bottom of the block.

HSR-C/LC



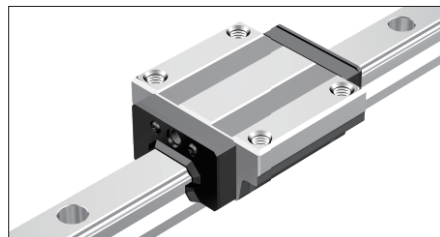
HSR-R/LR



Bolt size required when installing a C/LC-type block from the bottom is the same as that of the B/LB type.

3 Minor changes to outward appearance.

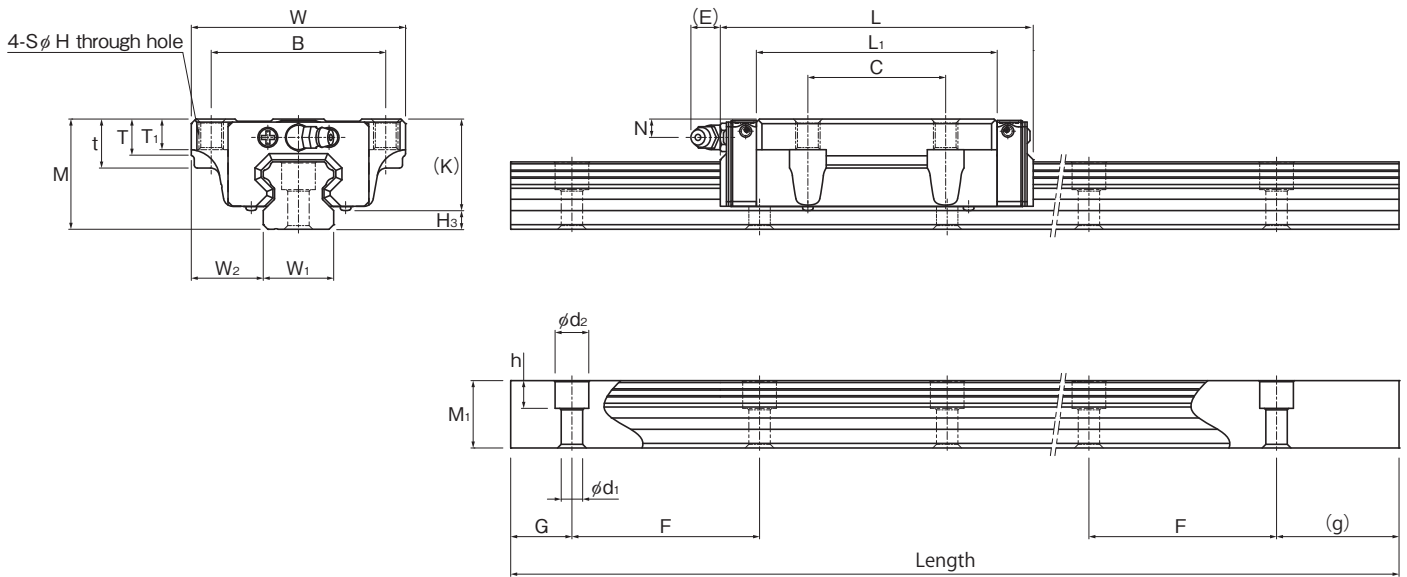
To better differentiate our products from those made by other companies, the THK logo is now easier to distinguish.



The overall length of the blocks remains the same.
The LM rail remains the same. Previous products can be used as they are.

* Addition of the product logo mark is scheduled to be carried out on a continuing basis as new THK products are released.

[Dimensional Table] Models HSR-C and HSR-LC

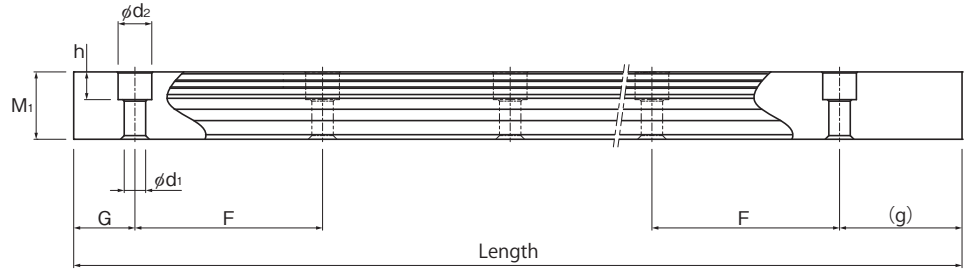
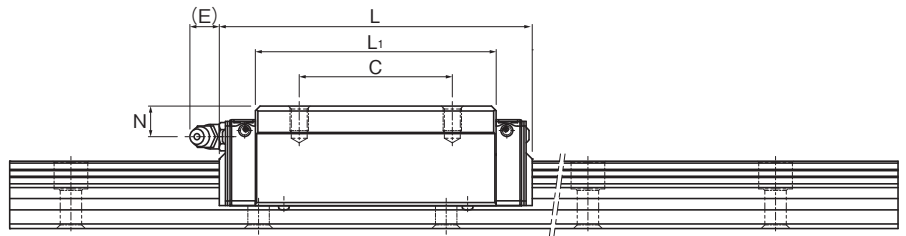
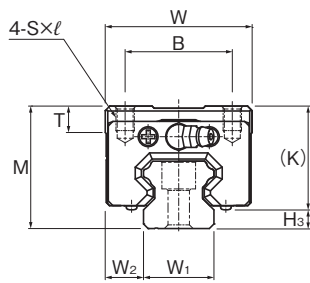


Unit: mm

Model No.	Outer dimensions			LM block dimensions													LM rail dimensions					
	Height	Width	Length	B	C	Mounting hole S	H	L_1	t	T	T_1	K	N	E	Grease nipple	H_3	Width W_1	Height W_2	Pitch M_1	Pitch F	Mounting hole $d_1 \times d_2 \times h$	G, g
	M	W	L																			
HSR15 C LC	24	47	56.6 74.6	38	30	M5	4.5	38.8 56.8	11	7	7	19.3	4.3	5.5	PB1021B	4.7	15	16	15	60	$4.5 \times 7.5 \times 5.3$	20,40
HSR20 C LC	30	63	74 90	53	40	M6	5.4	50.8 66.8	10	9.5	10	26	5	12	B-M6F	4	20	21.5	18	60	$6 \times 9.5 \times 8.5$	20,40
HSR25 C LC	36	70	83.1 102.2	57	45	M8	6.8	59.5 78.6	16	11	10	30.5	6	12	B-M6F	5.5	23	23.5	22	60	$7 \times 11 \times 9$	20,40
HSR30 C LC	42	90	98 120.6	72	52	M10	8.5	70.4 93	18	9	10	35	7	12	B-M6F	7	28	31	26	80	$9 \times 14 \times 12$	20,40
HSR35 C LC	48	100	109.4 134.8	82	62	M10	8.5	80.4 105.8	21	12	13	40.5	8	12	B-M6F	7.5	34	33	29	80	$9 \times 14 \times 12$	20,40
HSR45 C LC	60	120	139 170.8	100	80	M12	10.5	98 129.8	25	13	15	50	10	16	B-PT1/8	10	45	37.5	38	105	$14 \times 20 \times 17$	20,40

Model No.	Basic load rating		Static permissible moment kN-m					Mass	
	C	C_0	M_A		M_B		M_C	LM block	LM rail
	kN	kN	1 block	Double blocks	1 block	Double blocks	1 block	kg	kg/m
HSR15 C LC	10.9	15.7	0.0945	0.527	0.0945	0.527	0.0998	0.2	1.5
HSR20 C LC	19.8	27.4	0.218	1.2	0.218	1.2	0.235	0.35	2.3
HSR25 C LC	27.6	36.4	0.324	1.8	0.324	1.8	0.366	0.59	3.3
HSR30 C LC	40.5	53.7	0.599	3.1	0.599	3.1	0.652	1.1	4.8
HSR35 C LC	53.9	70.2	0.895	4.51	0.895	4.51	1.05	1.6	6.6
HSR45 C LC	82.2	101	1.5	8.37	1.5	8.37	1.94	2.8	11

[Dimensional Table] Models HSR-R and HSR-LR



Unit: mm

Model No.	Outer dimensions			LM block dimensions										LM rail dimensions					
	Height	Width	Length	B	C	Mounting hole S×ℓ	L ₁	T	K	N	E	Grease nipple	H ₃	Width	Height	Pitch	Mounting hole d ₁ ×d ₂ ×h	G,g	
	M	W	L																W ₁
HSR15 R LR	28	34	56.6 74.6	26	26	M4×5	38.8 56.8	6	23.3	8.3	5.5	PB1021B	4.7	15	9.5	15	60	4.5×7.5×5.3	20,40
HSR20 R LR	30	44	74 90	32	36 50	M5×6	50.8 66.8	8	26	5	12	B-M6F	4	20	12	18	60	6×9.5×8.5	20,40
HSR25 R LR	40	48	83.1 102.2	35	35 50	M6×8	59.5 78.6	9	34.5	10	12	B-M6F	5.5	23	12.5	22	60	7×11×9	20,40
HSR30 R LR	45	60	98 120.6	40	40 60	M8×10	70.4 93	9	38	10	12	B-M6F	7	28	16	26	80	9×14×12	20,40
HSR35 R LR	55	70	109.4 134.8	50	50 72	M8×12	80.4 105.8	11.7	47.5	15	12	B-M6F	7.5	34	18	29	80	9×14×12	20,40
HSR45 R LR	70	86	139 170.8	60	60 80	M10×17	98 129.8	15	60	20	16	B-PT1/8	10	45	20.5	38	105	14×20×17	20,40

Model No.	Basic load rating		Static permissible moment kN·m					Mass	
	C	C ₀	M _A		M _B		M _C	LM block	LM rail
	kN	kN	1 block	Double blocks	1 block	Double blocks	1 block	kg	kg/m
HSR15 R LR	10.9	15.7	0.0945	0.527	0.0945	0.527	0.0998	0.2	1.5
HSR20 R LR	19.8	27.4	0.218	1.2	0.218	1.2	0.235	0.35	2.3
HSR25 R LR	27.6	36.4	0.324	1.8	0.324	1.8	0.366	0.59	3.3
HSR30 R LR	40.5	53.7	0.599	3.1	0.599	3.1	0.652	1.1	4.8
HSR35 R LR	53.9	70.2	0.895	4.51	0.895	4.51	1.05	1.6	6.6
HSR45 R LR	82.2	101	1.5	8.37	1.5	8.37	1.94	2.8	11

THK CO., LTD.

Headquarters 2-12-10 Shibaura, Minato-ku, Tokyo 108-8506 Japan

International Sales Department Phone: +81-3-5730-3860

www.thk.com

North America

THK America, Inc.

- Headquarters.....Phone: +1-847-310-1111
- Chicago Office.....Phone: +1-847-310-1111
- North East Office.....Phone: +1-631-244-1565
- Atlanta Office.....Phone: +1-770-840-7990
- Los Angeles Office.....Phone: +1-949-955-3145
- San Francisco Office.....Phone: +1-925-455-8948
- Detroit Office.....Phone: +1-248-858-9330
- Toronto Office.....Phone: +1-905-820-7800

South America

THK BRAZIL INDUSTRIA E COMERCIO LTDA.

Phone: +55-11-3767-0100

Europe

THK GmbH

- European Headquarters.....Phone: +49-2102-7425-555
- Düsseldorf Office.....Phone: +49-2102-7425-0
- Stuttgart Office.....Phone: +49-7141-4988-500
- U.K. Office.....Phone: +44-1384-471550
- Italy Office.....Phone: +39-02-9901-1801

- Sweden Office.....Phone: +46-8-445-7630
- Austria Office.....Phone: +43-7229-51400
- Spain Office.....Phone: +34-93-652-5740
- Turkey Office.....Phone: +90-216-362-4050
- Prague Office.....Phone: +420-2-41025-100
- Moscow Office.....Phone: +7-495-649-80-47
- THK Europe B.V.
- Eindhoven Office.....Phone: +31-40-290-9500
- THK France S.A.S.
- Paris Office.....Phone: +33-1-7425-3800

China

THK (CHINA) CO., LTD.

- Headquarters.....Phone: +86-411-8733-7111
- Shanghai Branch.....Phone: +86-21-6219-3000
- Beijing Branch.....Phone: +86-10-8441-7277
- Chengdu Branch.....Phone: +86-28-8526-8025
- Guangzhou Branch.....Phone: +86-20-8523-8418
- Shenzhen Branch.....Phone: +86-755-2642-9587
- Xian Branch.....Phone: +86-29-8834-1712
- THK (SHANGHAI) CO., LTD.....Phone: +86-21-6275-5280

Taiwan

THK TAIWAN CO., LTD.

- Taipei Headquarters.....Phone: +886-2-2888-3818
- Taichung Office.....Phone: +886-4-2359-1505
- Tainan Office.....Phone: +886-6-289-7668

South Korea

- Seoul Representative Office.....Phone: +82-2-3468-4351

Singapore

THK LM System Pte. Ltd.....Phone: +65-6884-5500

Thailand

THK RHYTHM (THAILAND) CO., LTD. LM System Division

- Bangkok Branch.....Phone: +66-2751-3001

India

THK India Pvt. Ltd.

- Headquarters & Bengaluru Branch.....Phone: +91-80-2340-9934
- Pune Branch.....Phone: +91-72-7600-2071
- Chennai Branch.....Phone: +91-44-4042-3132
- Ahmedabad Branch.....Phone: +91-79-6134-4925
- Delhi Branch.....Phone: +91-12-4676-8695